

RIVER NORTH NEWSLETTER



Issue 001

December 2023/Vol. 001

Santa's Coming!



Santa Claus is coming to Turtle Park on Saturday, December 9th, from 1-3 PM. Kids can look forward to cookie decorating, a photo with Santa, and a special gift for each child.

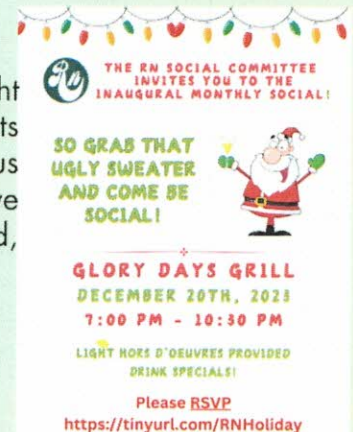
Please bring a wrapped gift labeled for a boy or girl with a maximum value of \$10.00, so we can distribute a gift to every child.

RSVP to Santa!
tinyurl.com/RNSanta23

Get Ready to Party!

Join us for our first neighborhood social at Glory Days on Arkwright Road on December 20th, from 7-10:30 p.m. The Social/Events Committee has organized this exciting event, complete with delicious light hors d'oeuvres generously donated by Glory Days and exclusive drink specials. Kindly RSVP to let us know if you'll be able to attend, We can't wait to see you there!

RSVP to Holiday Social
(<https://tinyurl.com/RNHoliday>)



Promote Your Business in Our Community Newsletter

In need of a contractor, plumber, or dog sitter? We want to support our residents and their businesses! Our team is offering a quarterly advertising space for you to showcase your company. The cost of each ad will be based on its size. The newsletter will be posted on our Facebook and Community pages, so you won't have to look any further! Let us give you a helping hand. **(More information on the next page!)**

Advertising Costs and Community Benefits



Promoting your business within the community will benefit everyone! Keep in mind that the size of your advertisement impacts the cost. Payment will be made to the Social Committee which will present a transparent and balanced spreadsheet to the Board each month, ensuring that the funds will be allocated efficiently with the focus being on social events that bring the River North friends and families together.

A
1.5 X 1.5
\$10/\$40

B
2 X 2
\$15/\$60

E
2.5 X 2.5
\$20/\$80

C
4 X 1
\$15/\$60

Custom Sizes are available.
Please fill out the form by
clicking [here](https://tinyurl.com/RNAdvert)
or typing
<https://tinyurl.com/RNAdvert>.

D
1.5 X 4
\$20/\$80

F
2 X 4
\$25/\$100

G
3 X 2.5
\$25/\$100